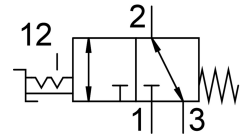


# Hand lever valve VHEF-HST-B32-N18

Part number: 4414861

FESTO



## Data sheet

| Feature                                  | Value                                                              |
|------------------------------------------|--------------------------------------------------------------------|
| Valve function                           | 3/2, bistable                                                      |
| Actuation type                           | Manual                                                             |
| Width                                    | 20 mm                                                              |
| Standard nominal flow rate               | 750 l/min                                                          |
| Pneumatic working port                   | 1/8 NPT                                                            |
| Operating pressure                       | -0.095 MPa...1 MPa<br>-0.95 bar...10 bar                           |
| Structural design                        | Plate seat                                                         |
| Nominal width                            | 5.6 mm                                                             |
| Exhaust air function                     | With flow control option                                           |
| Application note                         | Operate by hand only                                               |
| Sealing principle                        | Soft                                                               |
| Mounting position                        | Any                                                                |
| Manual override                          | Detenting                                                          |
| Type of control                          | Direct                                                             |
| Flow direction                           | Reversible                                                         |
| Lap                                      | Zero overlap                                                       |
| Max. switching frequency                 | 0.5 Hz                                                             |
| Explosion prevention and protection      | Zone 1 (ATEX)<br>Zone 2 (ATEX)<br>Zone 21 (ATEX)<br>Zone 22 (ATEX) |
| Operating medium                         | Compressed air as per ISO 8573-1:2010 [7:-:-]                      |
| Information on operating and pilot media | Operation with oil lubrication possible (required for further use) |
| Corrosion resistance class (CRC)         | 1 - Low corrosion stress                                           |
| LABS (PWIS) conformity                   | VDMA24364-B1/B2-L                                                  |
| Temperature of medium                    | -10 °C...60 °C                                                     |
| Ambient temperature                      | -10 °C...60 °C                                                     |
| Actuating torque                         | 0.7 Nm                                                             |
| Max. force on actuator                   | 200 N                                                              |
| Max. transverse load on actuator         | 200 N                                                              |
| Product weight                           | 236 g                                                              |

| Feature                | Value                                                    |
|------------------------|----------------------------------------------------------|
| Type of mounting       | Optionally:<br>Front panel mounting<br>With through-hole |
| Pneumatic connection 1 | 1/8 NPT                                                  |
| Pneumatic connection 2 | 1/8 NPT                                                  |
| Pneumatic connection 3 | 1/8 NPT                                                  |
| Note on materials      | RoHS-compliant                                           |
| Cover material         | PA-reinforced                                            |
| Seals material         | NBR                                                      |
| Housing material       | Wrought aluminum alloy, anodized                         |
| Lever material         | PA-reinforced                                            |